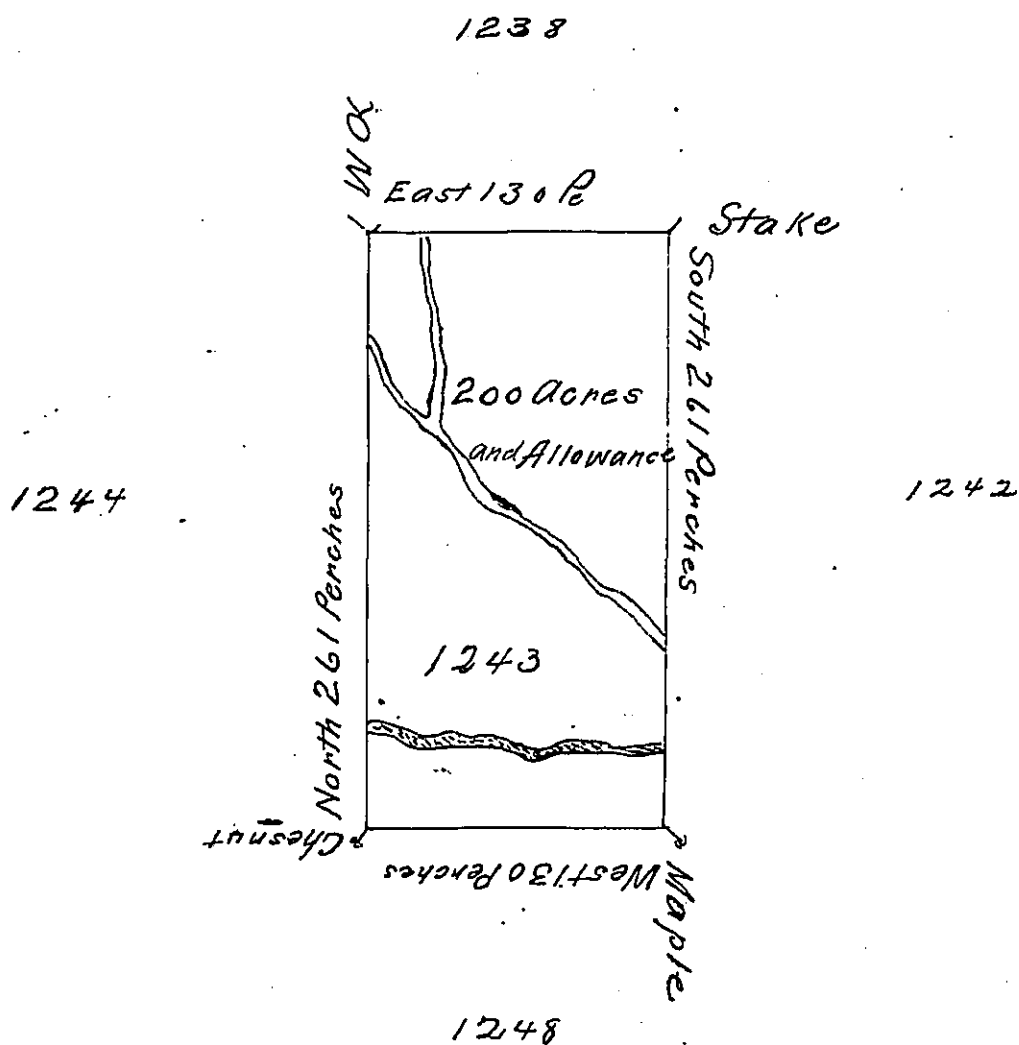


DONATION-LAND, in DISTRICT No 6,
Lot. No MCC XLIII



In Pursuance of an Act of General Assembly of the
State of Pennsylvania, passed the twenty-fourth Day of February, 1785,
intituled, 'An Act for directing the Mode of distributing the Donation
Lands promised to the Troops by this Commonwealth, and by Order
of the Surveyor General, with the Approbation of the Honourable
the Executive Council, I have Surveyed, on the Twenty Seventh
Day of November 1785, the above described Tract of Two
hundred Acres of Land, and Allowance of Six per Cent for
Roads, &c. No 1243. Situate in District No 6, on the West Side
of the Allegheny River, in the County of Westmoreland.

John LuHens, Esq.
Surveyor General.

Ja: Chrystie Deputy
Survayor.

IN TESTIMONY that the above is a copy of the original remaining on file in
the Department of Internal Affairs of Pennsylvania, made
conformably to an Act of Assembly approved the 16th day of
February, 1833, I have hereunto set my Hand and caused
the Seal of said Department to be affixed at Harrisburg,
this Twenty Eighth day of May 1908

Henry Horvath
Secretary of Internal Affairs.